

“
ENRICHING
LIVES
AND
PRESERVING
MOBILITY
”

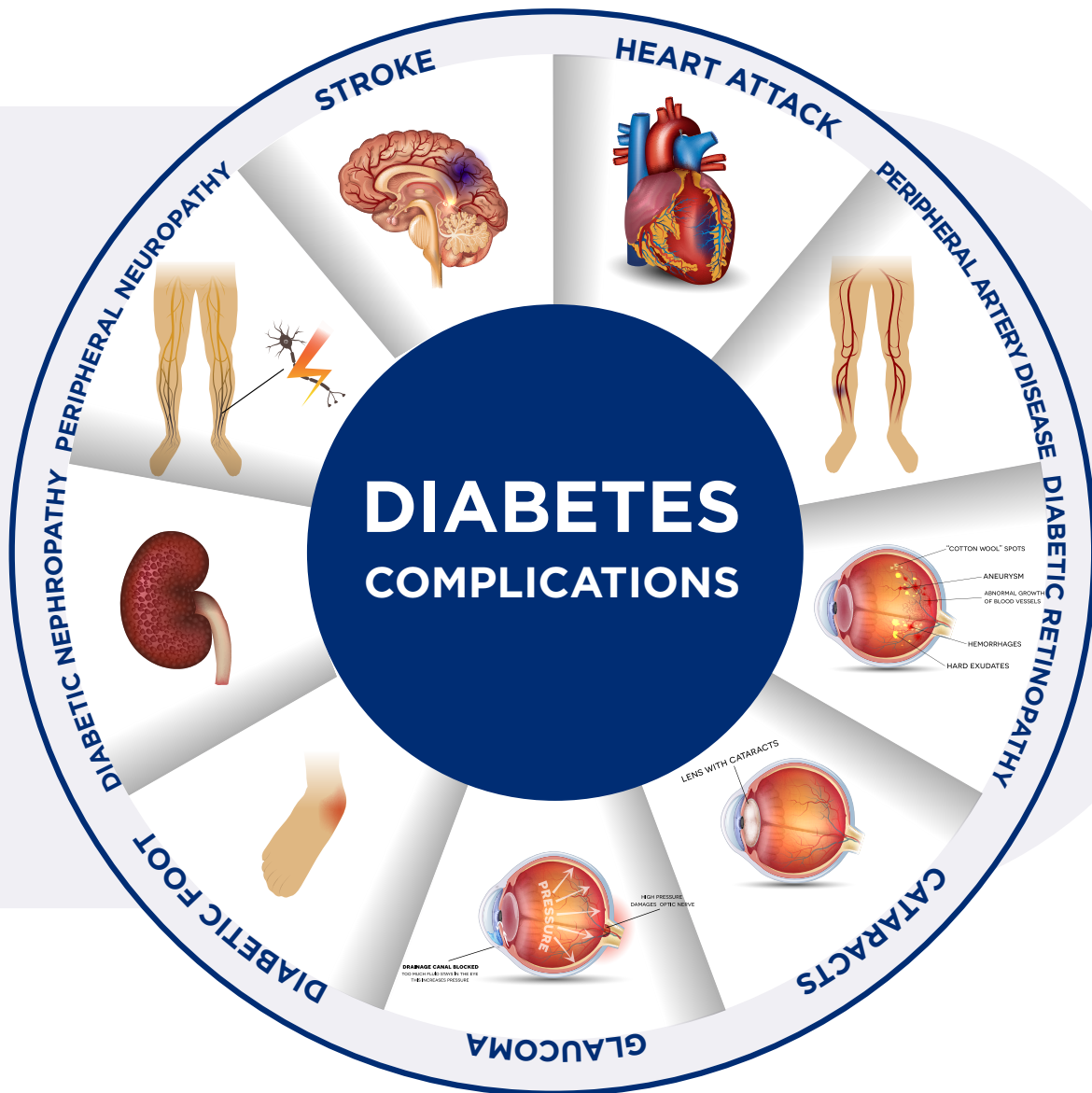


ADVANCED DIABETIC WOUND CARE

Walk the extra mile with comprehensive care.

@Bangkok Hospital Headquarters

LONG - TERM COMPLICATION OF DIABETES



15%

of diabetic patients develop diabetic ulcers in the foot and ankle

80%

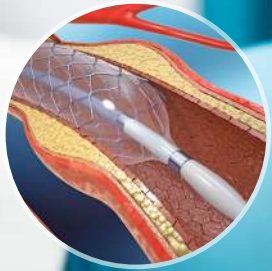
of lower limb amputations result from diabetes complications.

The risk of limb amputation in diabetic patients is

**15-20
TIMES**

higher than that in the general population

Reference: Center of Disease Control and Prevention (CDC) and Cleveland Clinic



WHY ADVANCED DIABETIC WOUND CARE

@BANGKOK HOSPITAL

OUR GOALS

- Minimizing the risk of lower limb amputation, such as foot, toe, and leg, caused by diabetes.
- Effective control of blood sugar levels by a multidisciplinary team.
- Improving the patient's quality of life.

OUR SERVICE HIGHLIGHTS

- Treating vascular diseases using advanced endovascular approaches and bypass surgery.
- Managing infections caused by diabetes
- Treating vascular diseases using advanced endovascular approach and bypass surgery



Preventive
Foot Care



Wound Healing
and Infection
Management



Restoring
Blood
Circulation



Promoting
Patient's
Quality of Life

OUR EXPERT SPECIALISTS



DR. CHANUNPORN
WIPUDHSIRI



DR. SITHIPHOL
CHINNAPONGSE

ENDOCRINOLOGY



**VASCULAR SURGERY
& WOUND CARE
AND HYPERBARIC
OXYGEN THERAPY**



DR. WASUPONG
SRIDERMMA



DR. KRAISITH
ARYA



DR. MANOCH
TECHACHOKWIWAT

NEPHROLOGY



CARDIOLOGY

DR. DONPICHIT
LAORAKPONGSE



DR. UBONVAN
JONGWUTIWES



DR. PAITHOON
BOONMA

INFECTIOUS
DISEASES



OPHTHALMOLOGY

DR. WEERAYA
PIMOLRAT



DR. CHOTIPAT
DANCHAIVIJITR

NEURO-
OPHTHALMOLOGY



**ORTHOPEDICS
(FOOT & ANKLE)**

DR. APISAN
CHINANUVATHANA

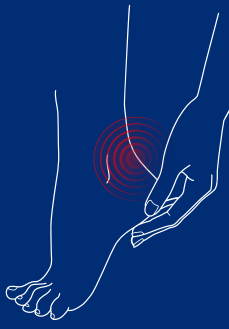


DR. NARATHORN
SOPONPRAPAKORN

REHABILITATION
MEDICINE
(CUSTOM ORTHOTICS)



ADVANCED DIABETIC WOUND CARE



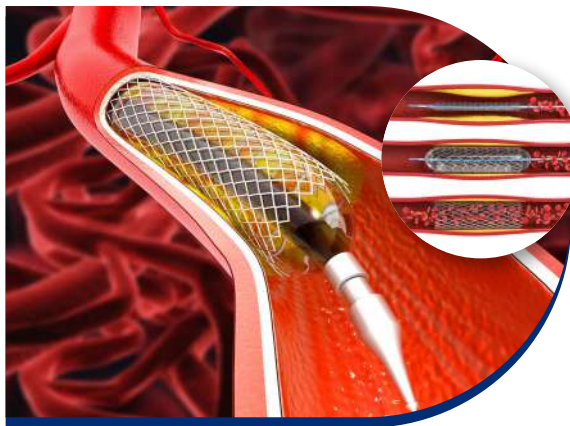
ADVANCED TECHNOLOGY FOR DIABETIC WOUND CARE

Accelerating the healing process using
medical advancements



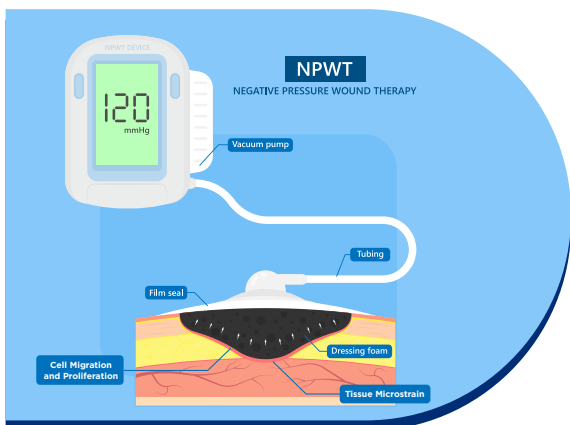
CO₂ ANGIOGRAPHY WITHOUT KIDNEY DAMAGE

A novel radiographic technique for vascular diagnostics and interventions in which a CO₂-based contrast medium is used, causing no adverse effects on the kidneys or the immune system.



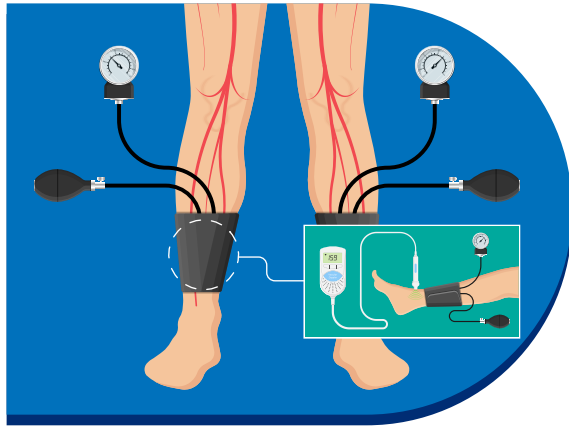
BALLOON ANGIOPLASTY

A minimally invasive endovascular procedure used to widen narrowed or obstructed arteries or veins without surgery.



NEGATIVE PRESSURE WOUND THERAPY (NPWT)

Creating an environment that promotes the wound healing process by stimulating tissue growth. Negative pressure also helps pull fluid and bacteria out of the wound, enabling it to heal better.



VASCULAR SCREENING AND DIAGNOSTICS

Vascular screenings are essential assessments used to evaluate the health and functionality of blood vessels, enabling an accurate diagnosis.

- Ankle-Brachial Index (ABI)
- Pulse Volume Recording (PVR)
- Pulse Wave Velocity (PWV)



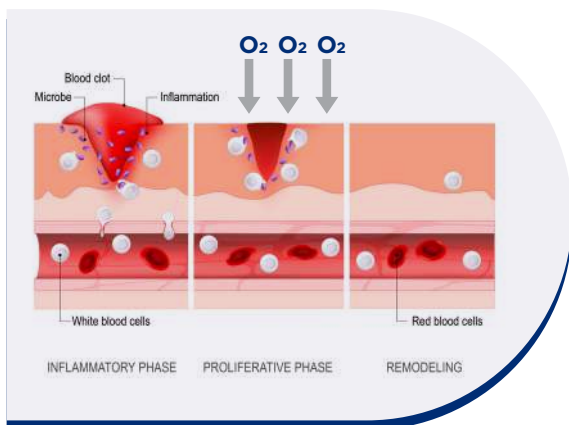
TRANSCUTANEOUS OXIMETRY (TCPO2)

Transcutaneous oximetry is a non-invasive method of measuring the oxygen level of the tissue below the skin in order to assess blood perfusion used to guide for appropriate treatment option.



HYPERBARIC OXYGEN THERAPY (HBOT)

Enhancing the body's natural healing process by inhalation of 100% oxygen in a pressurized environment. This therapeutic approach increases tissue oxygen availability in the tissue while promoting wound healing. Our hyperbaric chambers can accommodate patients up to 318 kg.



OXYGEN - RELEASING MATERIALS

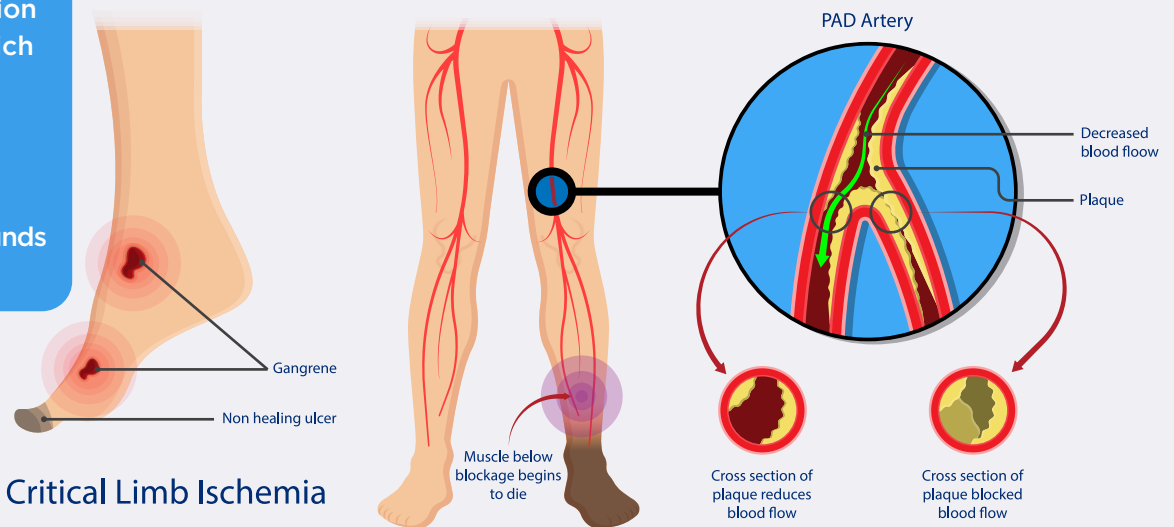
Advanced medical devices designed to deliver continuous topical oxygen directly to chronic wounds can enhance repair efficiency and promote tissue regeneration, leading to improved wound healing rates and minimized risk of serious complications.

TREATMENTS FOR CRITICAL LIMB ISCHEMIA

CRITICAL LIMB ISCHEMIA

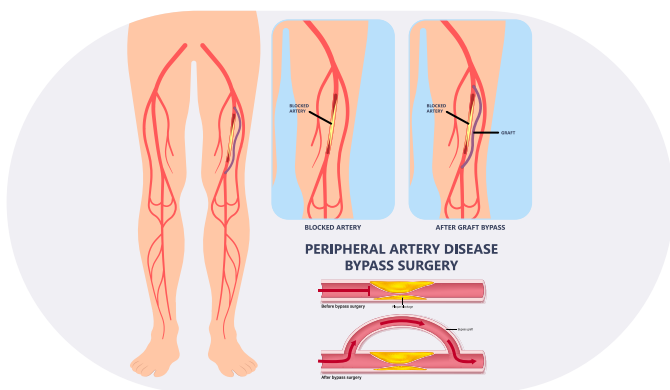
A severe obstruction of the arteries which markedly reduces blood flow to the extremities

- Pain at rest
- Non - healing wounds
- Gangrene



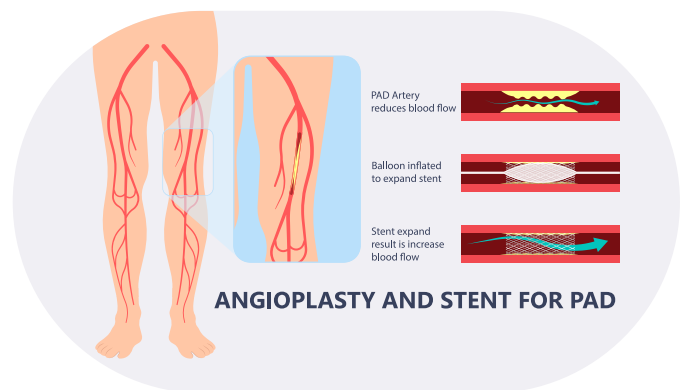
Critical Limb Ischemia

PERIPHERAL VASCULAR BYPASS (PVB)



Surgical revision of blood flow to restore perfusion distal to an occluded or disrupted arterial segment in the leg.

ENDOVASCULAR REVASCULARIZATION



A minimally invasive approach to unblock narrowed arteries that supply blood flow to the legs using advanced balloon angioplasty and stenting.



OUR OUTCOMES OF TREATING DIABETIC FOOT



We treat more than **380** chronic wounds/year by expert wound care specialists and multidisciplinary team (Y2023)



88% of chronic wounds can be completely healed within **6 months** (Y2023)



96% of patients with chronic diabetic foot do not need to undergo amputation (Y2023)



Enriching Lives and Preserving Mobility

Regular foot care alongside good diabetes management closely supervised by multidisciplinary team plays a crucial role in reducing the risk of being amputated.



 **RIGHT PLACE**

Diabetes Care Program certified by JCI, USA.

 **RIGHT TEAM**

Multidisciplinary team highly specialized in diabetic foot care

 **RIGHT TIME**

Timely treatments to lower the risk of amputation

ADVANCED DIABETIC WOUND CARE

@BANGKOK HOSPITAL

ADVANCED WOUND CARE

Tel. +66 2310 3002 and
+66 2755 1002

DIABETES, THYROID AND ENDOCRINE CENTER

Tel. +66 2755 1129, +66 2755 1130
and +66 2755 1697



2 Soi Soonvijai 7, New Petchburi Rd.,
Huaykwang, Bangkok 10310 Thailand



info@bangkokhospital.com



**ADVANCED
WOUND CARE**



**DIABETES, THYROID
AND ENDOCRINE CENTER**